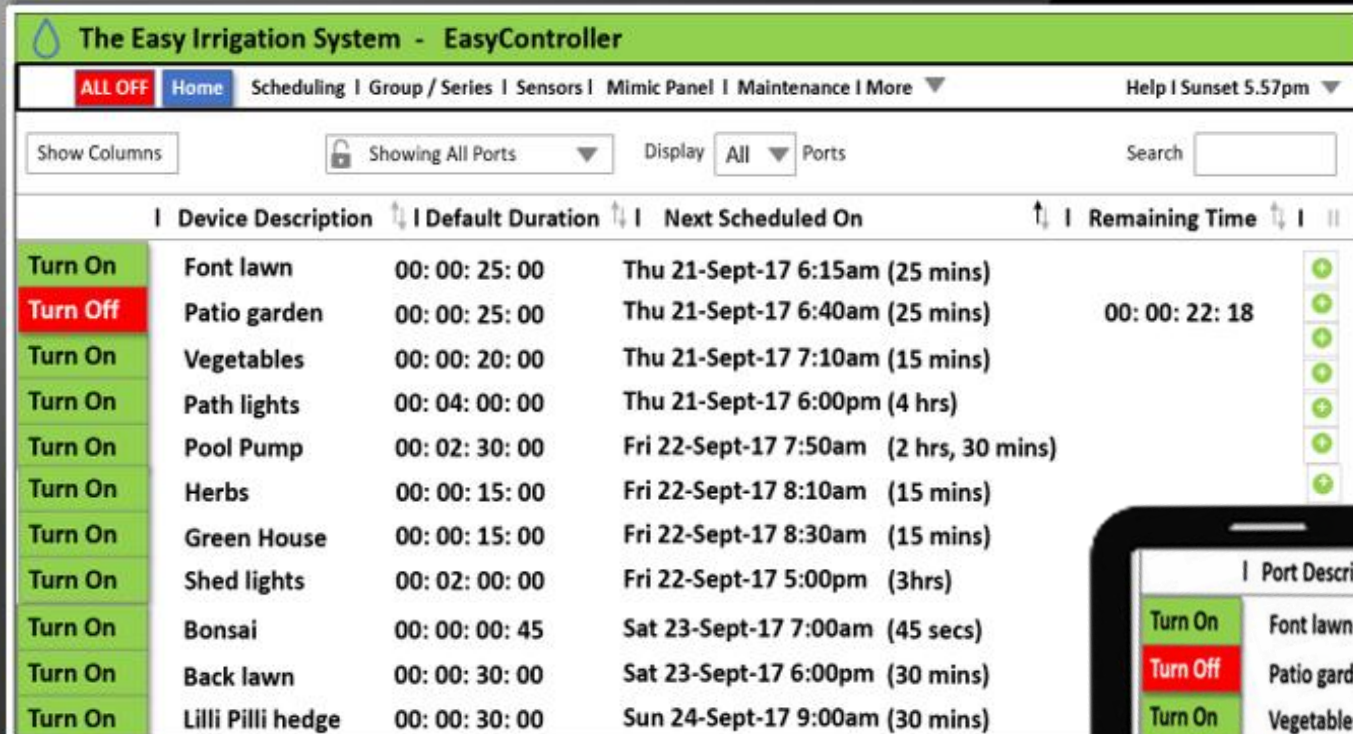


The Easy Irrigation System

Control irrigation, lighting & more



	Device Description	Default Duration	Next Scheduled On	Remaining Time
Turn On	Font lawn	00:00:25:00	Thu 21-Sept-17 6:15am (25 mins)	
Turn Off	Patio garden	00:00:25:00	Thu 21-Sept-17 6:40am (25 mins)	00:00:22:18
Turn On	Vegetables	00:00:20:00	Thu 21-Sept-17 7:10am (15 mins)	
Turn On	Path lights	00:04:00:00	Thu 21-Sept-17 6:00pm (4 hrs)	
Turn On	Pool Pump	00:02:30:00	Fri 22-Sept-17 7:50am (2 hrs, 30 mins)	
Turn On	Herbs	00:00:15:00	Fri 22-Sept-17 8:10am (15 mins)	
Turn On	Green House	00:00:15:00	Fri 22-Sept-17 8:30am (15 mins)	
Turn On	Shed lights	00:02:00:00	Fri 22-Sept-17 5:00pm (3hrs)	
Turn On	Bonsai	00:00:00:45	Sat 23-Sept-17 7:00am (45 secs)	
Turn On	Back lawn	00:00:30:00	Sat 23-Sept-17 6:00pm (30 mins)	
Turn On	Lilli Pilli hedge	00:00:30:00	Sun 24-Sept-17 9:00am (30 mins)	



Unmatched features & benefits

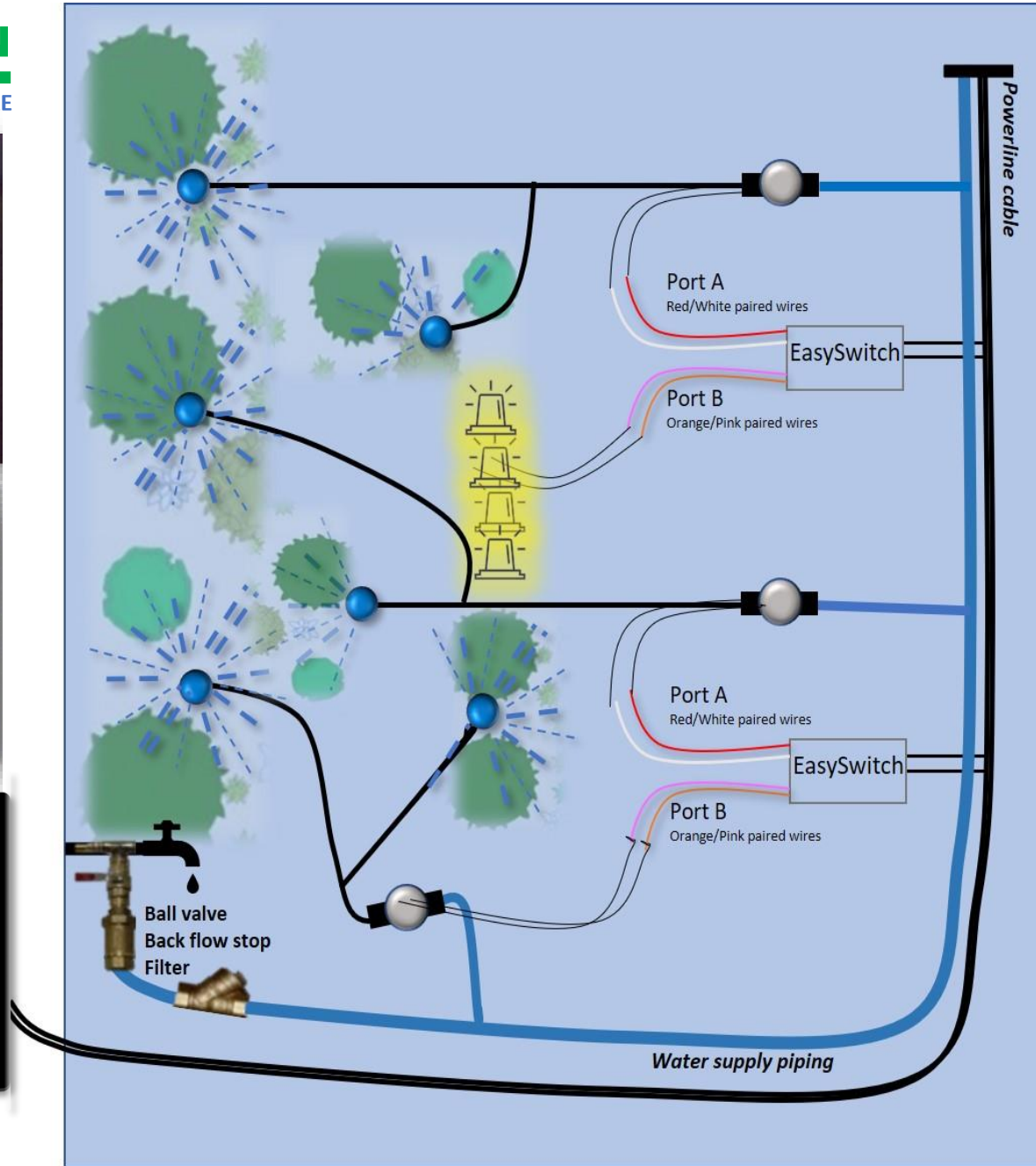
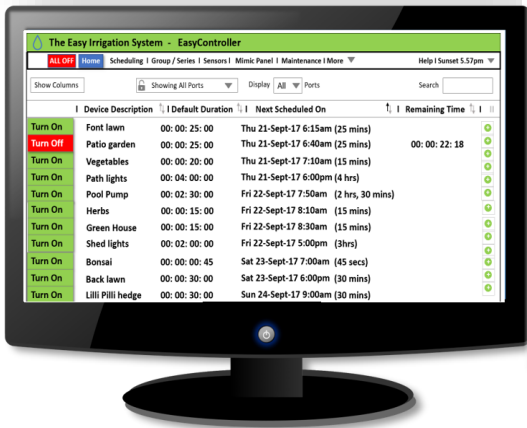
- EasyController setup in less than 10 minutes.
- Multi-user remote control using any web enabled device (i.e. smartphone, tablet, PC)
- Powerful manual & scheduled controls
- Control dozens of irrigation zones
- Water saving features
- Control garden lights
- Control pumps and diverter valves
- Control mains powered devices
- Only a single main cable
- Less digging, less piping
- Simple installation and expansion
- No clumsy knobs and dials

info@easyirrigation.com.au

www.easyirrigation.com.au

EASY IRRIGATION

CONTROL IRRIGATION, LIGHTING AND MORE



Simple Installation

Simply lay the single powerline cable together with the main water supply line around the landscape preferably just below soil surface to protect the cable from physical and sun damage. The powerline cable can be branched in any direction if needed.

Connected with 2 black wires to the powerline cable at convenient places are the EasySwitches.

Each EasySwitch has 2 output ports each port having 2 coloured paired wires. The output port paired wires can then be wired to a solenoid valve wires or to 12-volt light or a 24VAC pump start relay or a mains power relay to control mains powered devices. The mains powered relay connection should be performed by a qualified electrician.

All connections should be carefully crimped or soldered and must be made waterproof preferably with glue lined heat shrink wrap.

Note: Wiring to the powerline and from the EasySwitch output ports can be extended over many meters.

Connected anywhere along the single cable (the “powerline”) are “EasySwitches” which each control 2 outputs (irrigation, lights, pumps, diverter, etc).

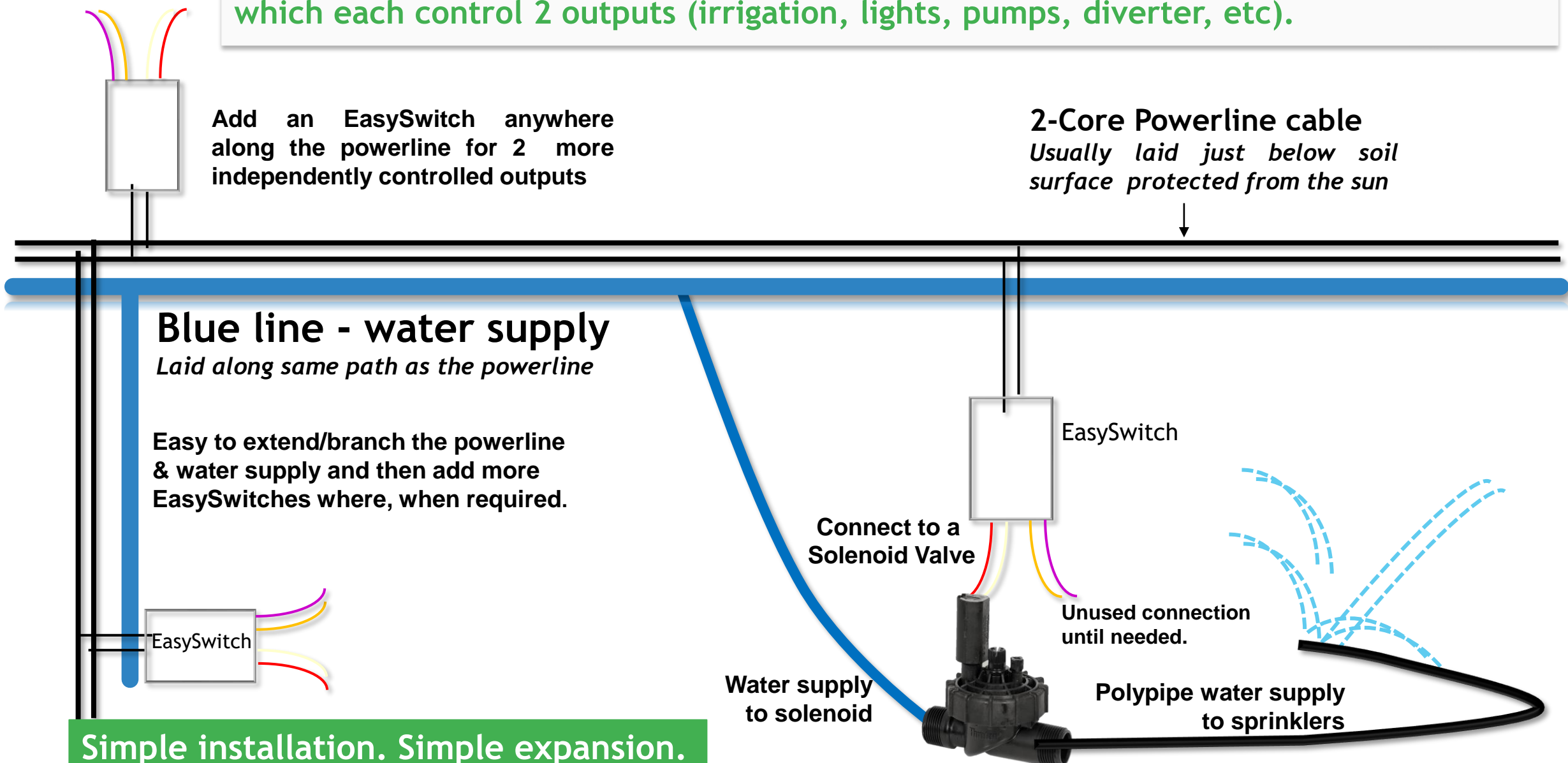
Add an EasySwitch anywhere along the powerline for 2 more independently controlled outputs

2-Core Powerline cable
Usually laid just below soil surface protected from the sun

Blue line - water supply
Laid along same path as the powerline

Easy to extend/branch the powerline & water supply and then add more EasySwitches where, when required.

Simple installation. Simple expansion.



Yes, you can Retrofit!

Confusing
Knobs & Dials Controller



Delicate multi-core-wire
cable

Conventional systems mostly use a “manifold” installation, always have a fixed limit to the maximum number of valves as well a strict limit enforced by the multi-core cable.

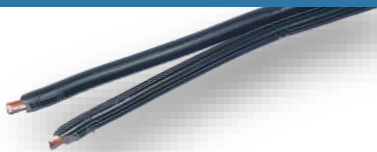
Expansion beyond these limits is impossible without a new controller and/or re-digging to lay more cable.

Installation and expansion is difficult, labour intensive and presents maintenance issues:-

- If a wire within the multicore cable should break- which coloured wire and where?
- How do you add a new zone when all the wires in the multicore cable are used?
- Cost to dig and lay piping and extra cable?
- Cost to install an additional controller ?

Fortunately these clumsy conventional systems can be retrofitted using the old multi-core cabling and then extended with a single robust powerline cable. The Easy Irrigation Control system gives you the ability to expand as needed with massively improved functionality.

To this ...



Powerline cable - *No delicate limited multicore cable*

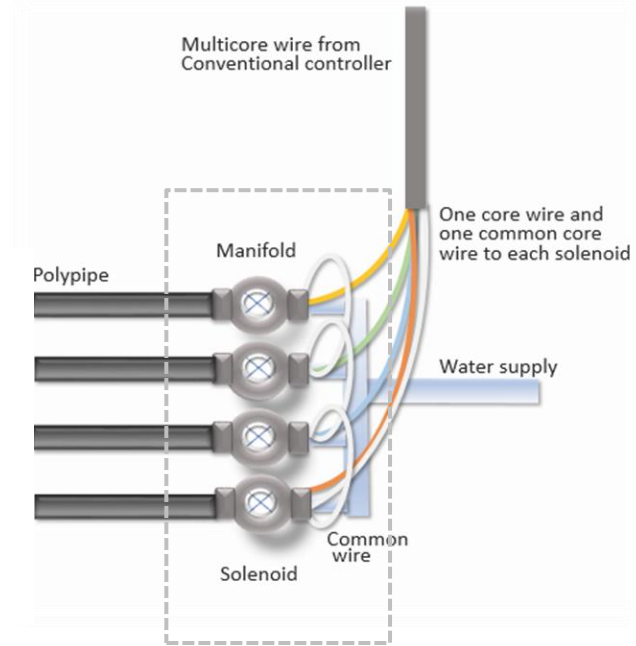


EasySwitch

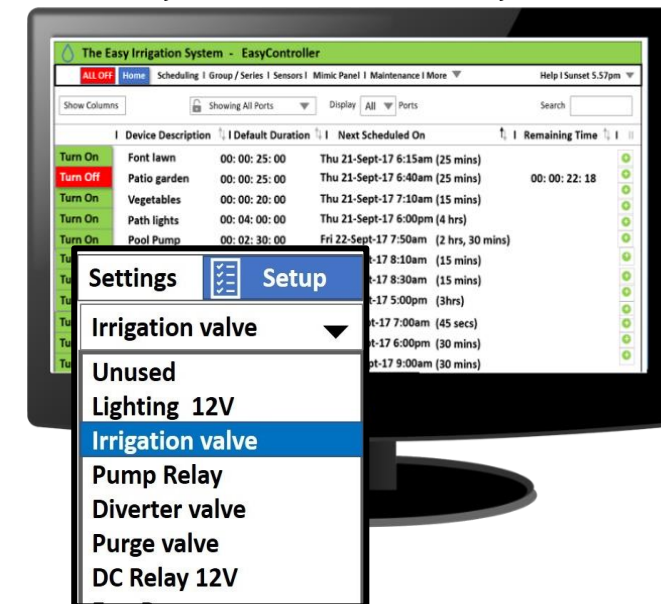
No knobs, No dials
just user friendly intuitive PC screens, easy to edit to suit your control needs with multi-user remote or local control.

Simple installation and maintenance with one single 2-core strong cable - the “Powerline”. Dozens of **EasySwitches** can be connected anywhere along the powerline for independent controls of zones. Each zone/port can be set or reset for different use (valve, pump, light, other) giving almost unlimited flexibility and expansion.

The system can be small and grow to suit your changing needs.



EasyController - User Friendly



EASY IRRIGATION

CONTROL IRRIGATION, LIGHTING AND MORE



Easy Irrigation System

The Easy Irrigation System has been designed and developed in Australia with assistance from the Australian Federal Government Research & Development incentive program. Using proven technology implemented in over 100 million devices worldwide, this control system provides users with unmatched features and benefits.

The Easy Irrigation System's main features:

- Uses only a **single low voltage cable** laid across the landscape and can be branched in any direction to suit your landscape.
- Practically **unlimited number of zones**, using the same controller.
- Simple and powerful **multiuser remote screen control**.
- Irrigation with **automatic control of required pumps and diverter valves**.
- **Control garden lighting & mains devices** (pool pumps, fans, spot light, etc).
- **Less wiring, digging and piping** required for installation.
- **Remote access** - Wi-Fi, LAN, internet (smartphone, PC, laptop, tablet).
- **Scalability & total flexibility** - add/move/remove any zones easily.
- **All zones independently controllable**.
- **“Wet and Wait”** watering cycling for minimizing runoff.
- **Durations to the second** for precise control and water savings
- **“Series”** 2 or more zones sequentially controlled zones as one entity.
- **“Group”** zones for simultaneous ONs - especially useful for lighting.
- **Sun event scheduling** (Sunrise, Solar Noon, Sunset) for turn on or turn off.
- **Practically unlimited scheduling** - Daily, days of week, every nth day.
- **Cancel a scheduled ON** without changing the overall schedule settings.
- **Suitable for DIY or professional installation**.

For more information please email us at info@easyirrigation.com.au or visit www.easyirrigation.com.au